



CALDWELL  
AND  
COMPANY

DESIGN SERVICES COMPANY  
NASHVILLE, TENNESSEE  
615-833-7818

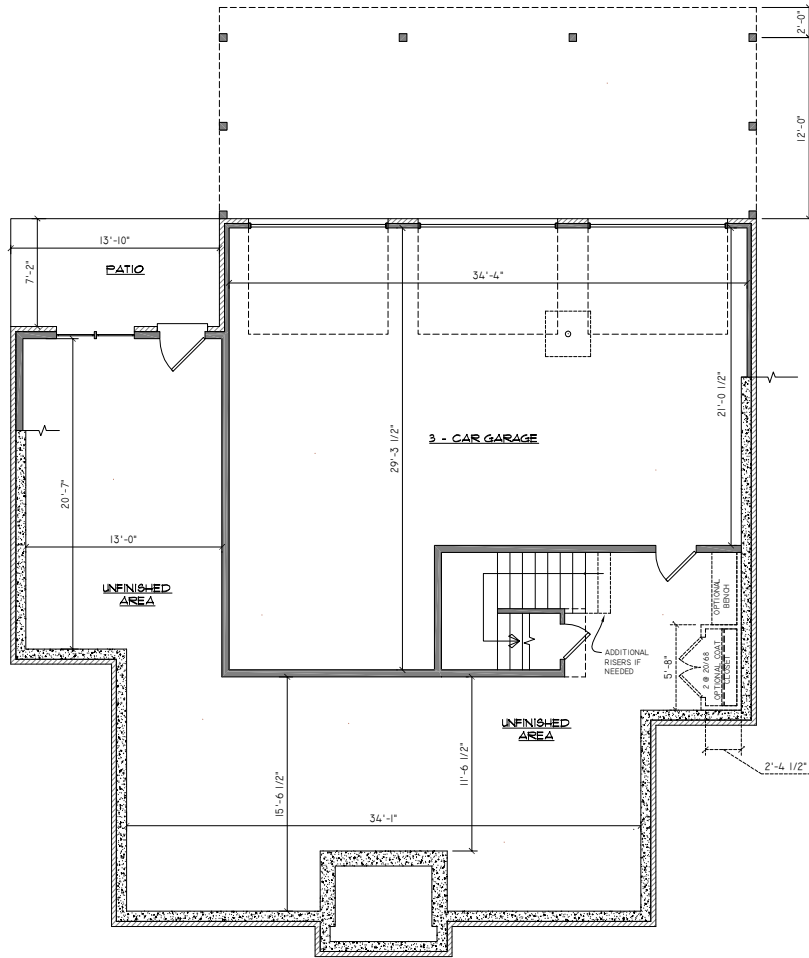
PLAN NO. 341T

DRAWN BY: DS  
CHECKED BY: DS  
DATE: 10.12.2007  
SCALE: 1/4" = 1'-0"  
JOB NO: 07022  
FILE: CA07022VIR-C  
REV. DATE:

COVER SHEET

FRONT ELEVATION

COPYRIGHT 2007, DESIGN SERVICES COMPANY



CALDWELL  
AND  
COMPANY

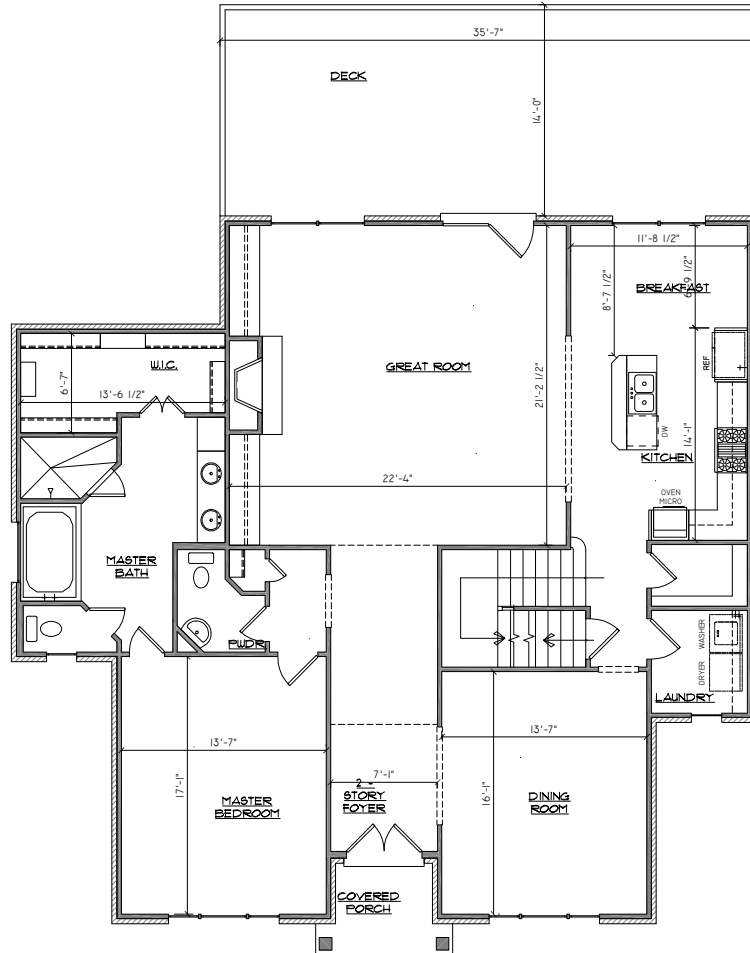
DESIGN SERVICES COMPANY  
NASHVILLE, TENNESSEE  
615-833-7818  
PLAN NO. 341T

DRAWN BY: DS  
CHECKED BY: DS  
DATE: 10.12.2007  
SCALE: 1/4" = 1'-0"  
JOB NO: 07022  
FILE: CA07022VR-8  
REV. DATE:

SHEET NUMBER  
1 OF 5

**BASEMENT / FOUNDATION PLAN**

COPYRIGHT 2007, DESIGN SERVICES COMPANY



FIRST FLOOR PLAN

COPYRIGHT 2007, DESIGN SERVICES COMPANY

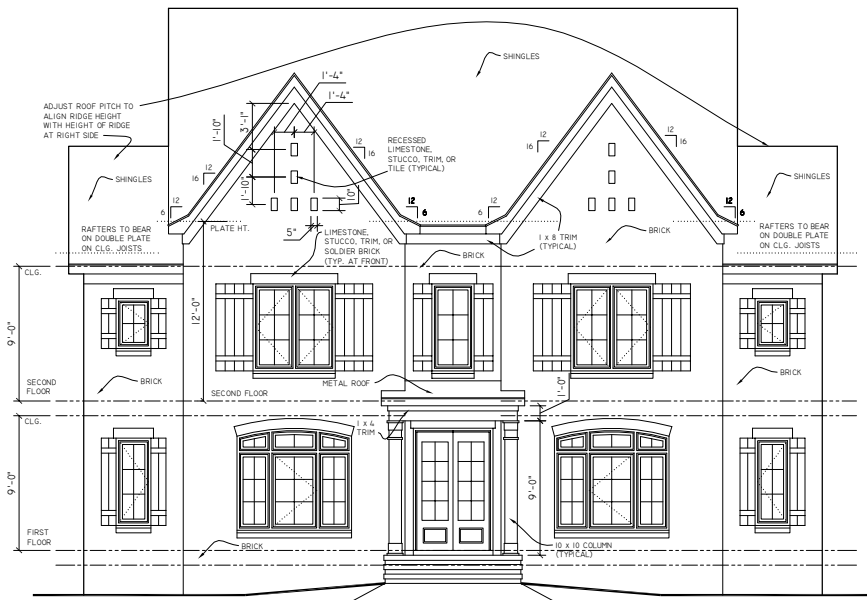
CALDWELL  
AND  
COMPANY

DESIGN SERVICES COMPANY  
NASHVILLE, TENNESSEE  
615-833-7818  
PLAN NO. 341T

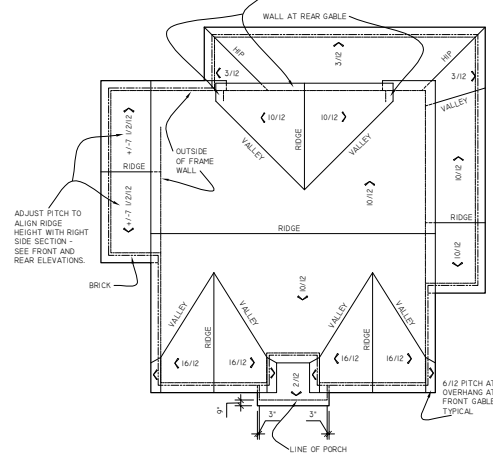
DRAWN BY: DS  
CHECKED BY: DS  
DATE: 10.12.2007  
SCALE: 1/4" = 1'-0"  
JOB NO: 07022  
FILE: CA07022VR-F  
REV. DATE:

SHEET NUMBER  
2 OF 3



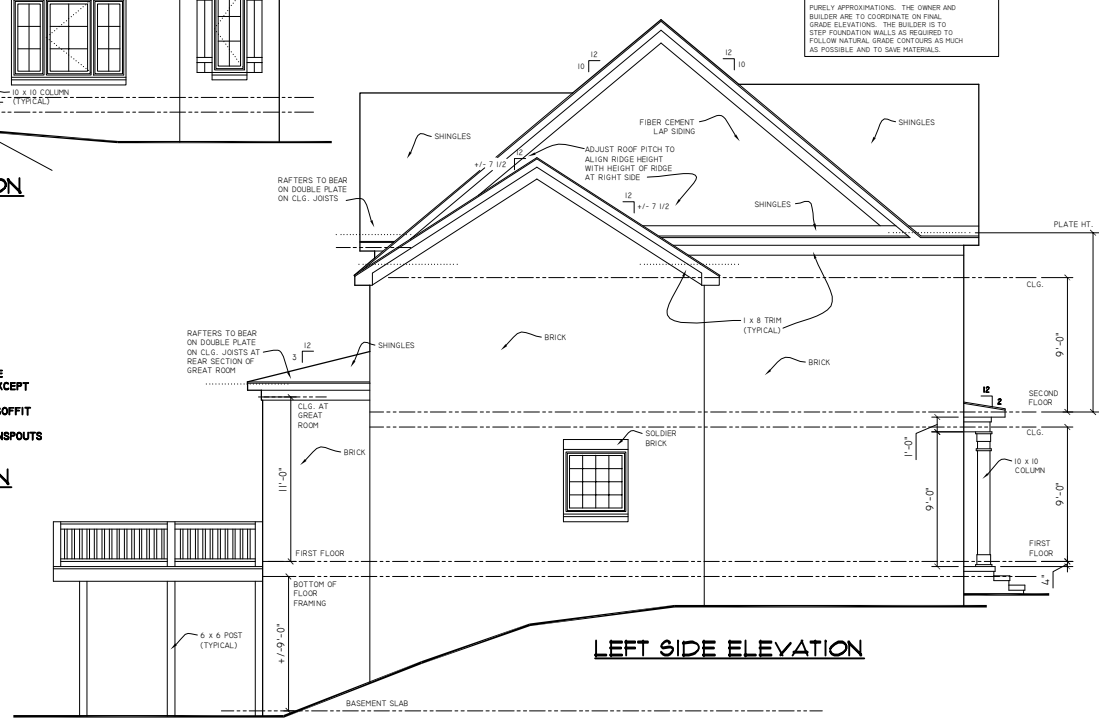


**FRONT ELEVATION**



**NOTES:**  
 16" OVERHANG FROM OUTSIDE OF FRAME WALL, TYPICAL EXCEPT WHERE NOTED.  
 PROVIDE ROOF, RIDGE, AND SOFFIT VENTS AS REQUIRED.  
 PROVIDE GUTTERS AND DOWNSPOUTS AS REQUIRED.

**ROOF PLAN**  
 SCALE: 1/8" = 1'-0"



**LEFT SIDE ELEVATION**

**EXTERIOR ELEVATIONS**

COPYRIGHT 2007, DESIGN SERVICES COMPANY

**CALDWELL  
 AND  
 COMPANY**

**DESIGN SERVICES COMPANY**  
 NASHVILLE, TENNESSEE  
 615-833-7818

**PLAN NO. 341T**

DRAWN BY: DS  
 CHECKED BY: DS  
 DATE: 10.12.2007  
 SCALE: NOTED  
 JOB NO: 07022  
 FILE: CA07022RV-V  
 REV. DATE:

SHEET NUMBER  
 4 OF 5

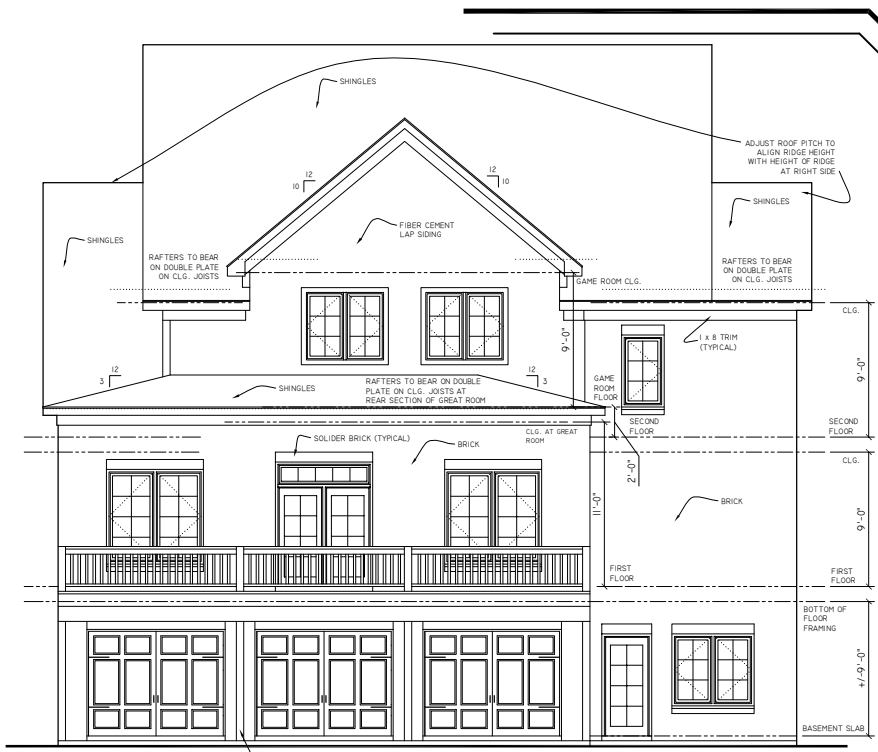
CALDWELL  
AND  
COMPANY

DESIGN SERVICES COMPANY  
NASHVILLE, TENNESSEE  
615-835-7818

PLAN NO. 341T

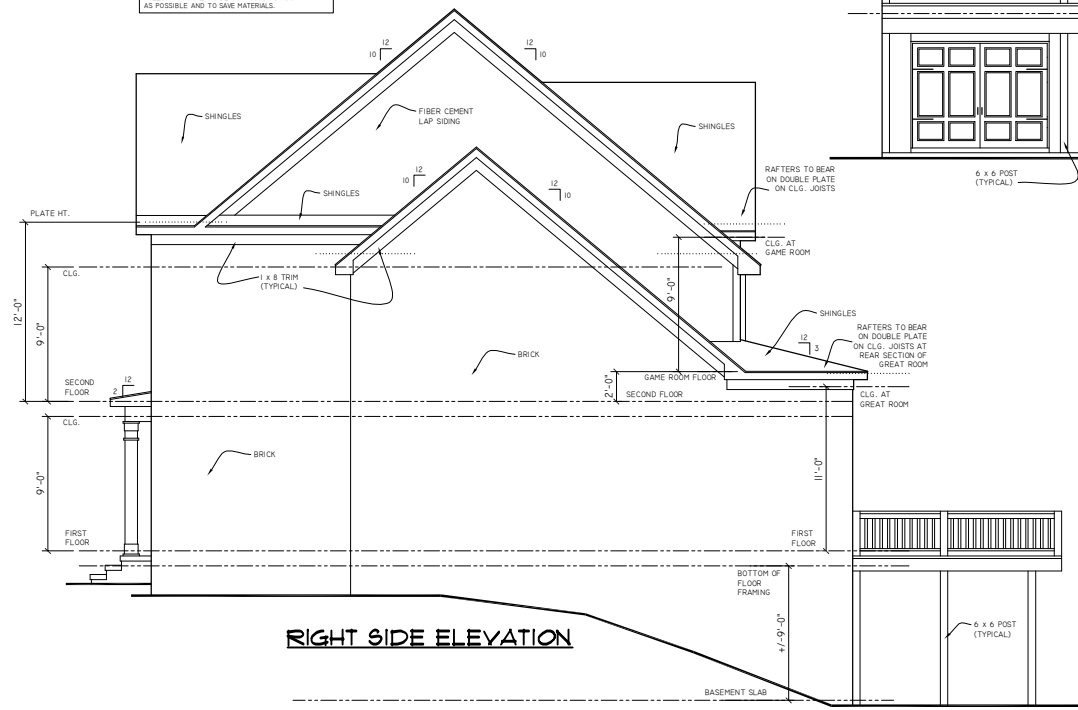
DRAWN BY: DS  
CHECKED BY: DS  
DATE: 10.12.2007  
SCALE: 1/4" = 1'-0"  
JOB NO: 07022  
FILE: CA07022VR-V  
REV. DATE:

SHEET NUMBER  
3 OF 5



**REAR ELEVATION**

FINISH GRADES SHOWN ON DRAWINGS ARE PURELY APPROXIMATIONS. THE OWNER AND BUILDER ARE TO COORDINATE ON FINAL GRADE ELEVATIONS. THE BUILDER IS TO STEP FOUNDATION WALLS AS REQUIRED TO FOLLOW NATURAL GRADE CONTOURS AS MUCH AS POSSIBLE AND TO SAVE MATERIALS.



**RIGHT SIDE ELEVATION**

**EXTERIOR ELEVATIONS**

COPYRIGHT 2007, DESIGN SERVICES COMPANY